

8

7

6

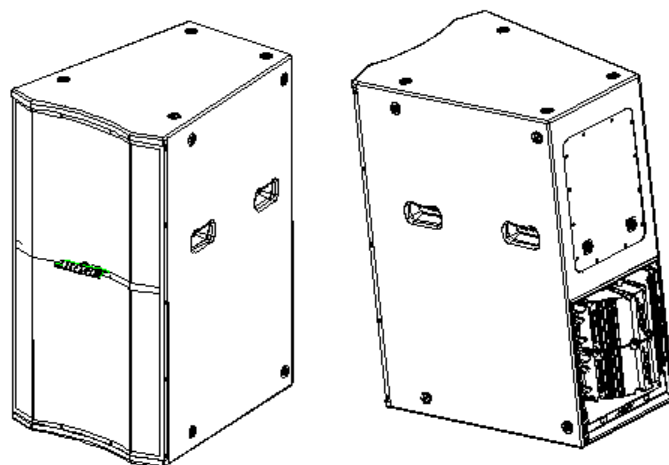
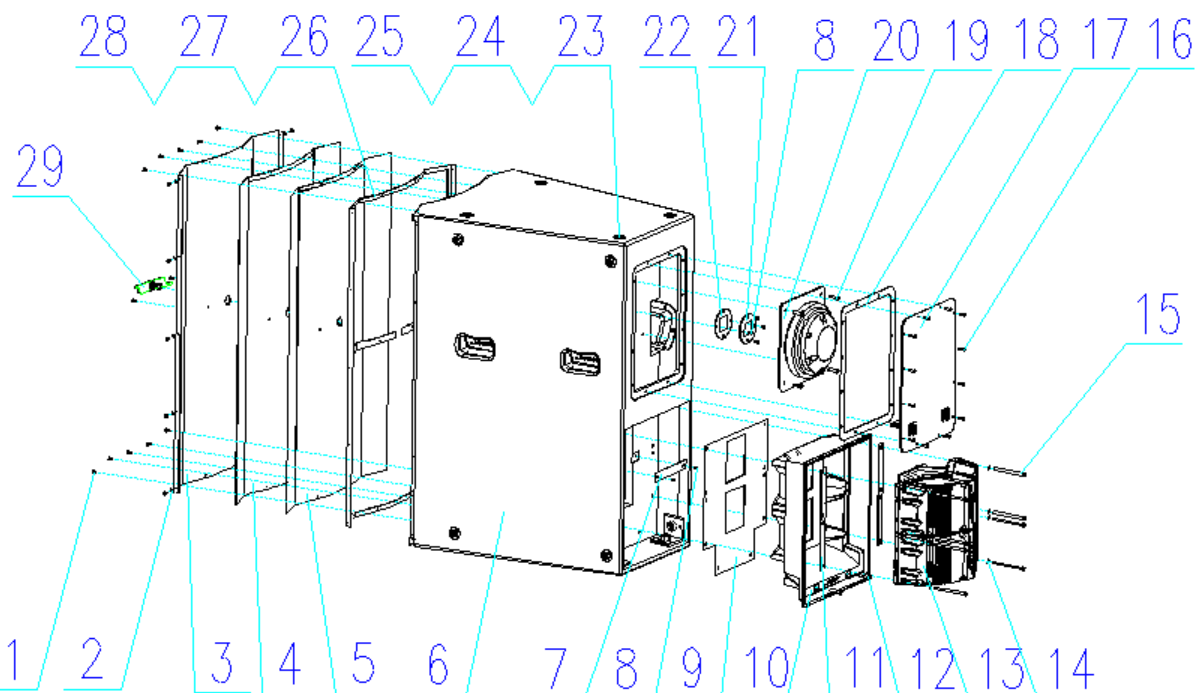
5

4

3

1

DATE	REV	NO.	DESCRIPTION	REV	NO.	DATE
09-09-01	1					



NOTES:

1. MATERIAL: SEE BOM
2. FINISH: N/A
3. COSMETIC AND ACOUSTIC TESTING PER BOSE TEST SPECIFICATION TSXXXXXX
4. PRODUCT VALIDATED: PER BOSE VALIDATION PLAN VPXXXXXX
5. CONTROL CHARACTERISTICS (C) TO BE PER BOSE OPERATING PROCEDURE OP148887.

BOSE/LT9402-WR/BLA BOM

Speaker BOM

#	Elder Part No.	DWG. Title	Specification	DWG.	Qty	BOSE Part No.
1	B-LSH-01	screw	Tp 7/4*12mm/A/stainless/black	LT9702-01-117	22pcs	
2	I-LSH-01	washer	flat washer 4*9*0.8		14PCS	
3	B-RTW-W-M002	grille	BOSE/LT9402-WR/BLA/BLK	LT9402-01-116	1pcs	
4	B-XYM-03	foam	TA 842mm*577mm*4.5mm		1pcs	
5	X-XXX-XX	Cloth	842mm*577mm		1pcs	
6	B7-NXKQW-SM072	Cabinet	BOSE/LT9402-WR/PLY		1pcs	
7	B-YNP-F10	plate, dividing	LT9702-01-140*238*2mm	LT9702-01-103	1pcs	
8	B-LSH-03	screw	Kp 7/8*12mm/A/BLK	LT9402-01-106	6pcs	
9	B-EVA-98	EVA gasket	V2 Cover EVA gasket 351*200*1/BLK		2pcs	
10	B-YNP-F28	V2 cover	LT9702-WR/377*310*104.5		1pcs	
11	B-OP-42	gasket	Rubber 262*191*1/BLK		2pcs	
12	B-LSH-01	screw	WH 6*30M D=10 stainless/black	LT9402-01-104	2pcs	
13	B7-VMZ-F02	Vee-2 assembly	V2 driver		2pcs	
14	B-OP-45	washer	Nylon 6/12*6*6*6mm/BLK	LT9402-01-106	8pcs	
15	B-LSH-01	screw	TP 13/6*9mm/M/BLK		8pcs	
16	B2-LSH-02	screw	Tp 8/4*15mm/M/stainless/black	LT9702-01-119	12pcs	
17	B7-DZBZ-FM017	panel input, asy	BOSE/LT9402-WR		1pcs	
18	B-EVA-19	EVA gasket	340*240*2mm/adhesive single side		1PCS	
19	B-LSH-03	screw	Tp 13/6*30mm/M/stainless/black	LT9402-01-109	4pcs	
20	B7-VMZ-F01	comp driver, asy	BOSE/T1.4hp compression driver		1pcs	
21	B-YNP-F48	dist. alignment, comp. driver	LT9702-01-117*75.4*2.5mm	LT9702-01-105	1pcs	
22	B-EVA-36	EVA gasket	q75.4*47.5*1.5mm/adhesive single side	LT9702-01-106	1pcs	
23	B-LSH-041	insert, rigging, 13-16, discal	q30*114*19.5*25mm stainless	LT9402-01-103	1pcs	
24	B-LSH-042	screw	CH 17/4.5*20mm/M/stainless/black	LT9402-01-109	16pcs	
25	I-OP-09	washer	PVC washer 15.5*19.6*1.4mm		16pcs	
26	B-EVA-23	EVA gasket	561*111*1.5mm/adhesive single side	LT9702-01-126	2pcs	
27	B-EVA-45	EVA gasket	265*151*1.5mm/adhesive single side	LT9702-01-127	2pcs	
28	B-EVA-36	EVA gasket	841*211*1.5mm/adhesive single side	LT9702-01-128	2pcs	
29	B7-BPZ-FM001	logo, ltr	BOSE/BLK		1pcs	

THIRD ANGLE PROJECTION	LEVEL	ENGINEER	DATE	09-09-01
	3	CHECKER	09-09-01	
NOTE	2	ENGINEER	09-09-01	
1	REL FOR PROD PER	AL REV	09-09-01	
SCALE	CU. CODE	CLASS	DWG. NO.	REV
			9-09-01-54029	01
				1

8

7

6

5

4

3

2

1